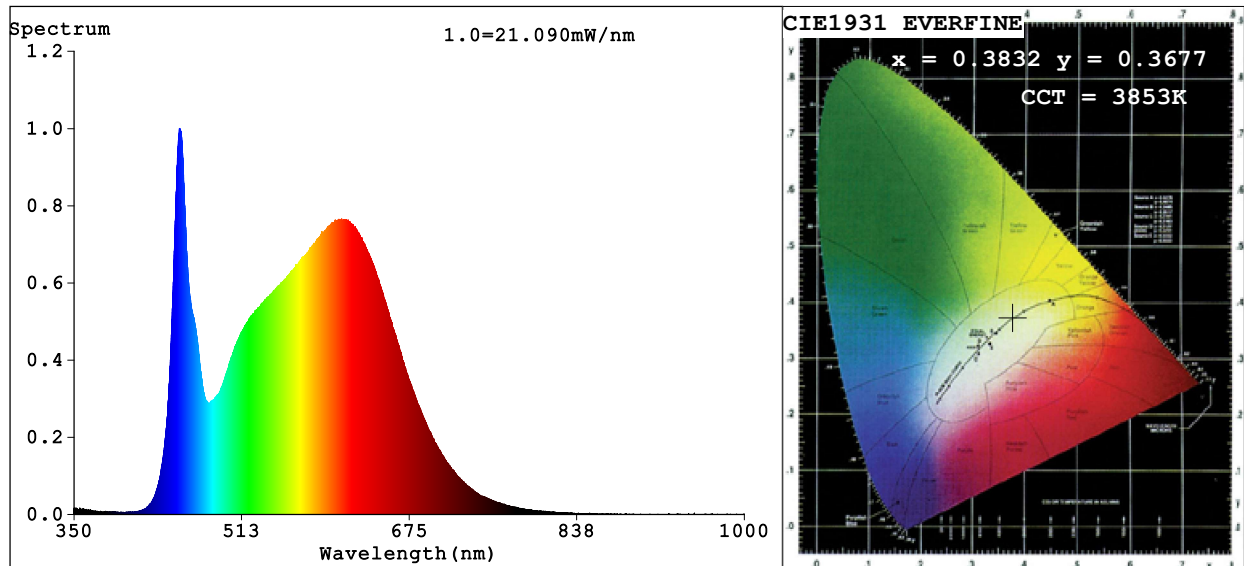


## Spectrum Test Report



### Color Parameters:

Chromaticity Coordinate:  $x=0.3832$   $y=0.3677$   $u'=0.2306$   $v'=0.4979$   
CCT=3853K (Duv=-0.0051) Dominant WL:Ld =582.7nm Purity=25.3%  
Ratio:R=20.6% G=75.2% B=4.2%; Peak WL:Lp=452.3nm FWHM=21.7nm  
Render Index:Ra=92.4 CRI=89.3 TM30:Rf=88 Rg=100 Lav=578.4nm  
R1 =94 R2 =97 R3 =97 R4 =91 R5 =93 R6 =93 R7 =91  
R8 =83 R9 =61 R10=93 R11=92 R12=72 R13=96 R14=99 R15=92

### Photo Parameters:

Flux = 934.8 lm Eff. : 77.92 lm/W Fe = 3.170 W

### Electrical parameters:

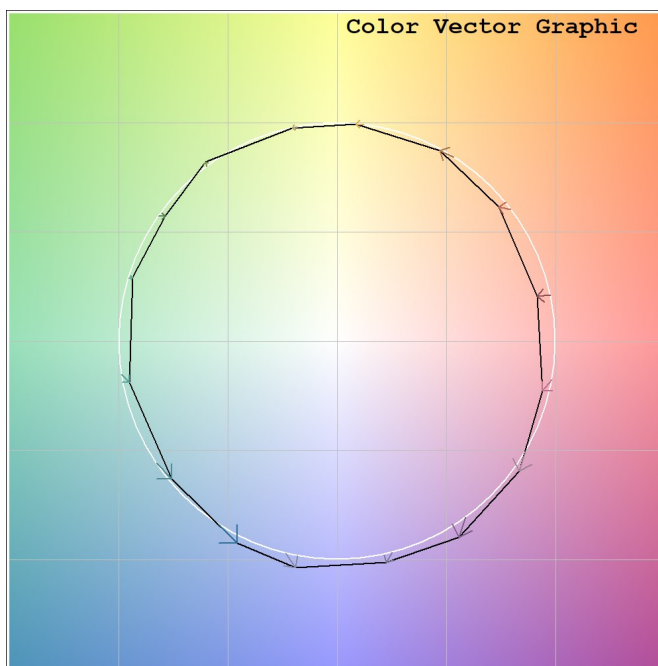
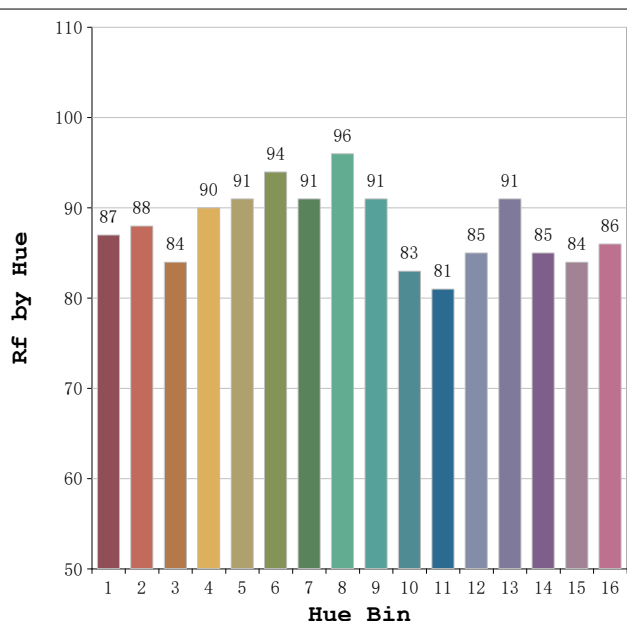
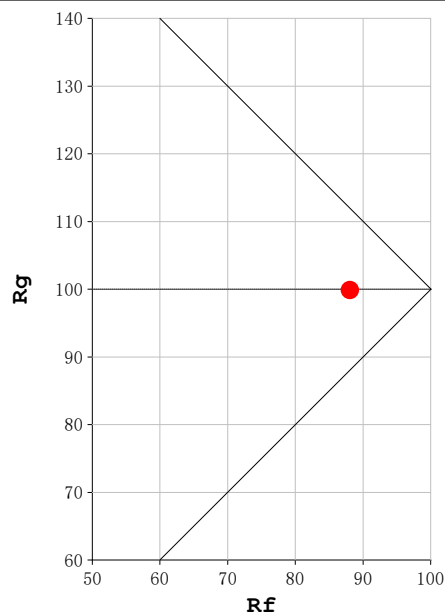
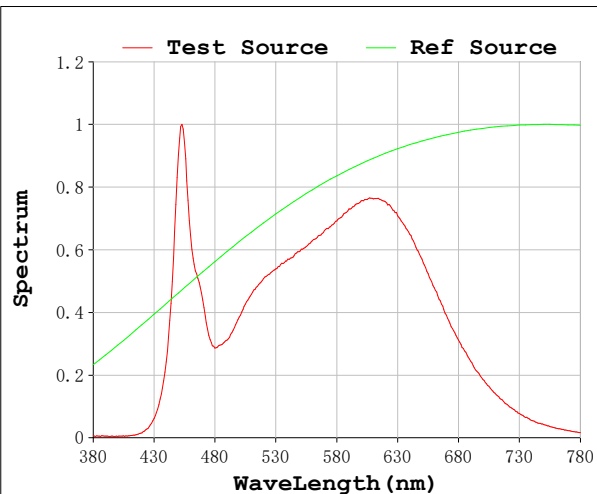
V = 23.998 V I = 0.4999 A P = 12.00 W PF = 1.000

Status: Integral T = 1359 ms Ip = 41284 (63%)

Model:Ecoled Neon 3D 40K  
Tester:Sergio Caneros  
Temperature:27Deg  
Manufacturer:Luz Negra S.L.

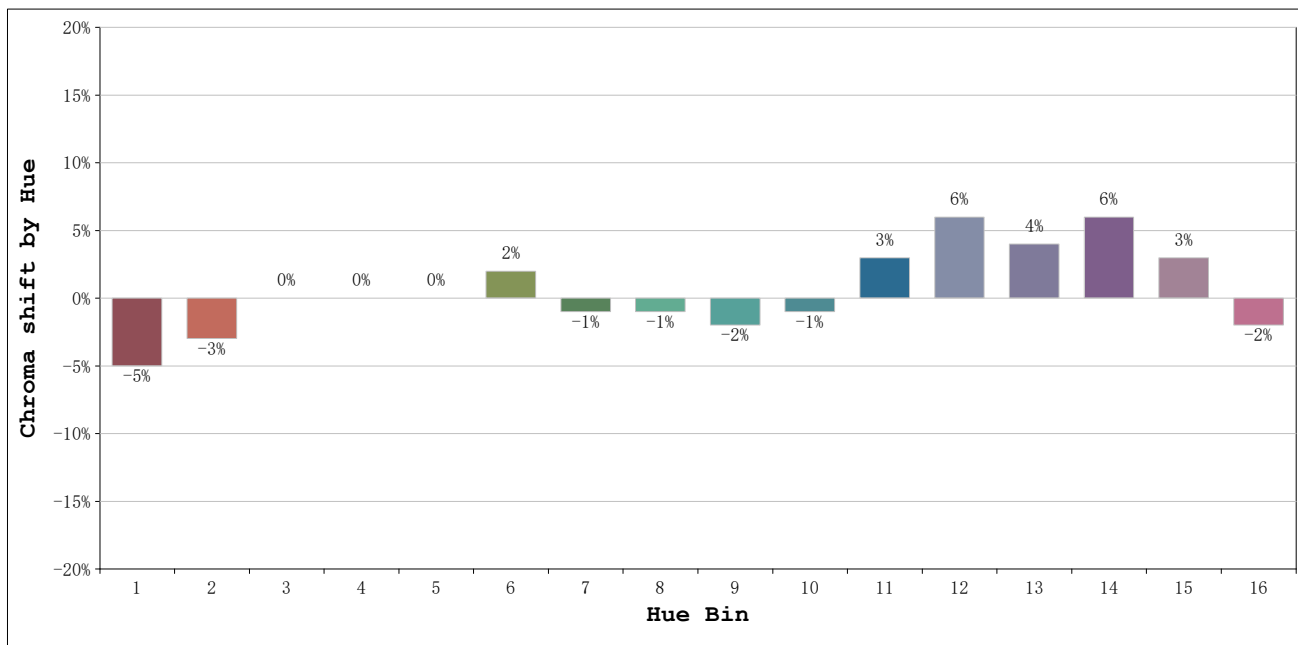
Number:10.288  
Date:2024-11-21 10:02:03  
Humidity:35%  
Remarks:100cm de Neón

**Rf: 88**      **CCT: 3853 K**      **u': 0.2306**  
**Rg: 100**      **Duv: -0.0051**      **v': 0.4979**



Model:Ecoled Neon 3D 40K  
 Tester:Sergio Caneros  
 Temperature:27Deg  
 Manufacturer:Luz Negra S.L.

Number:10.288  
 Date:2024-11-21 10:02:03  
 Humidity:35%  
 Remarks:100cm de Neón



			Graphic shift(%)	
Hue Bin	Hue Angle	Rf	Chroma	Hue
1	0.0° - 22.5°	87	-5	1
2	22.5° - 45.0°	88	-3	4
3	45.0° - 67.5°	84	0	7
4	67.5° - 90.0°	90	0	4
5	90.0° - 112.5°	91	0	2
6	112.5° - 135.0°	94	2	0
7	135.0° - 157.5°	91	-1	-1
8	157.5° - 180.0°	96	-1	0
9	180.0° - 202.5°	91	-2	4
10	202.5° - 225.0°	83	-1	10
11	225.0° - 247.5°	81	3	12
12	247.5° - 270.0°	85	6	6
13	270.0° - 292.5°	91	4	-3
14	292.5° - 315.0°	85	6	-7
15	315.0° - 337.5°	84	3	-8
16	337.5° - 360.0°	86	-2	-5

Model:Ecoled Neon 3D 40K  
 Tester:Sergio Caneros  
 Temperature:27Deg  
 Manufacturer:Luz Negra S.L.

Number:10.288  
 Date:2024-11-21 10:02:03  
 Humidity:35%  
 Remarks:100cm de Neón